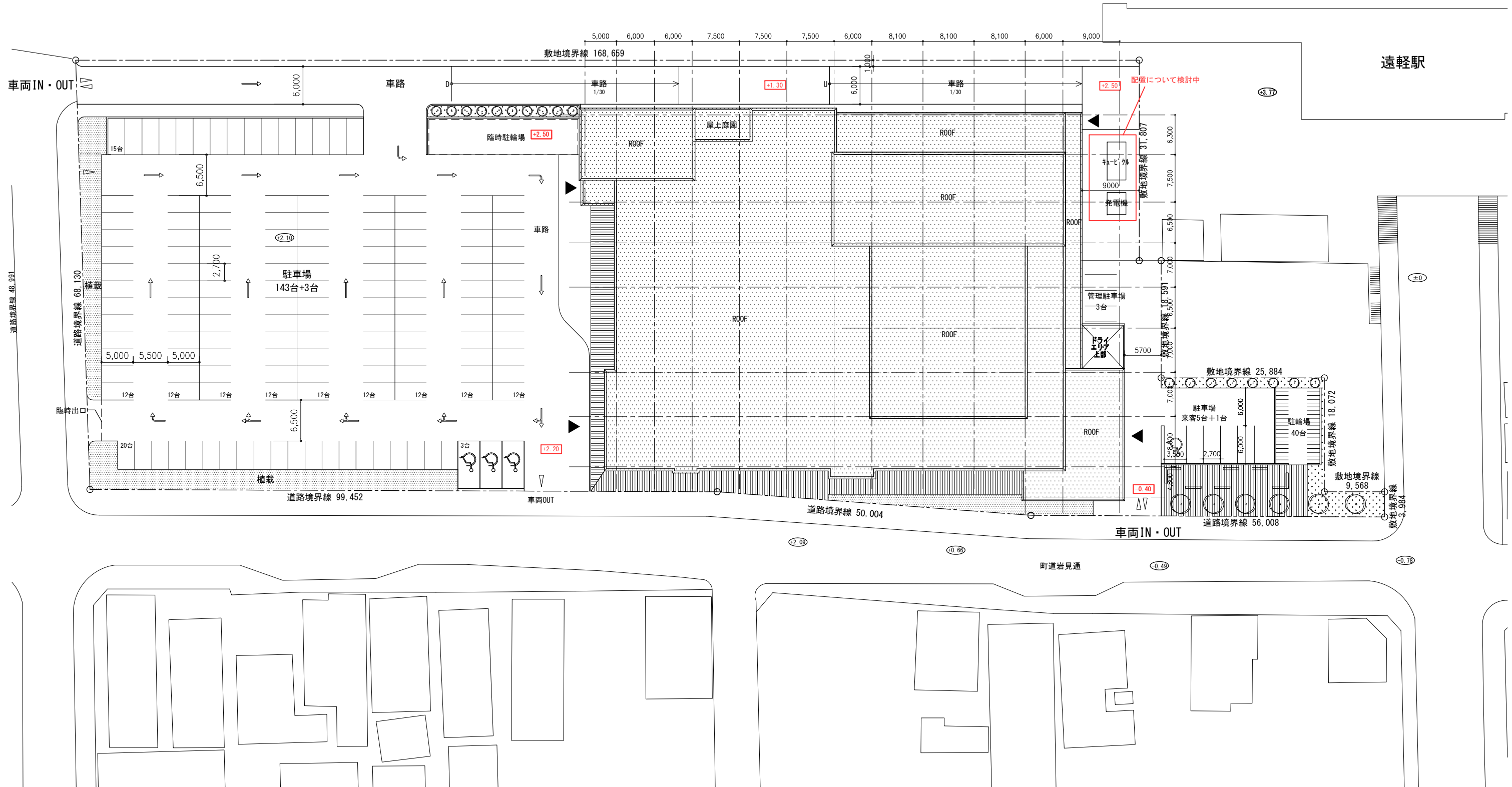
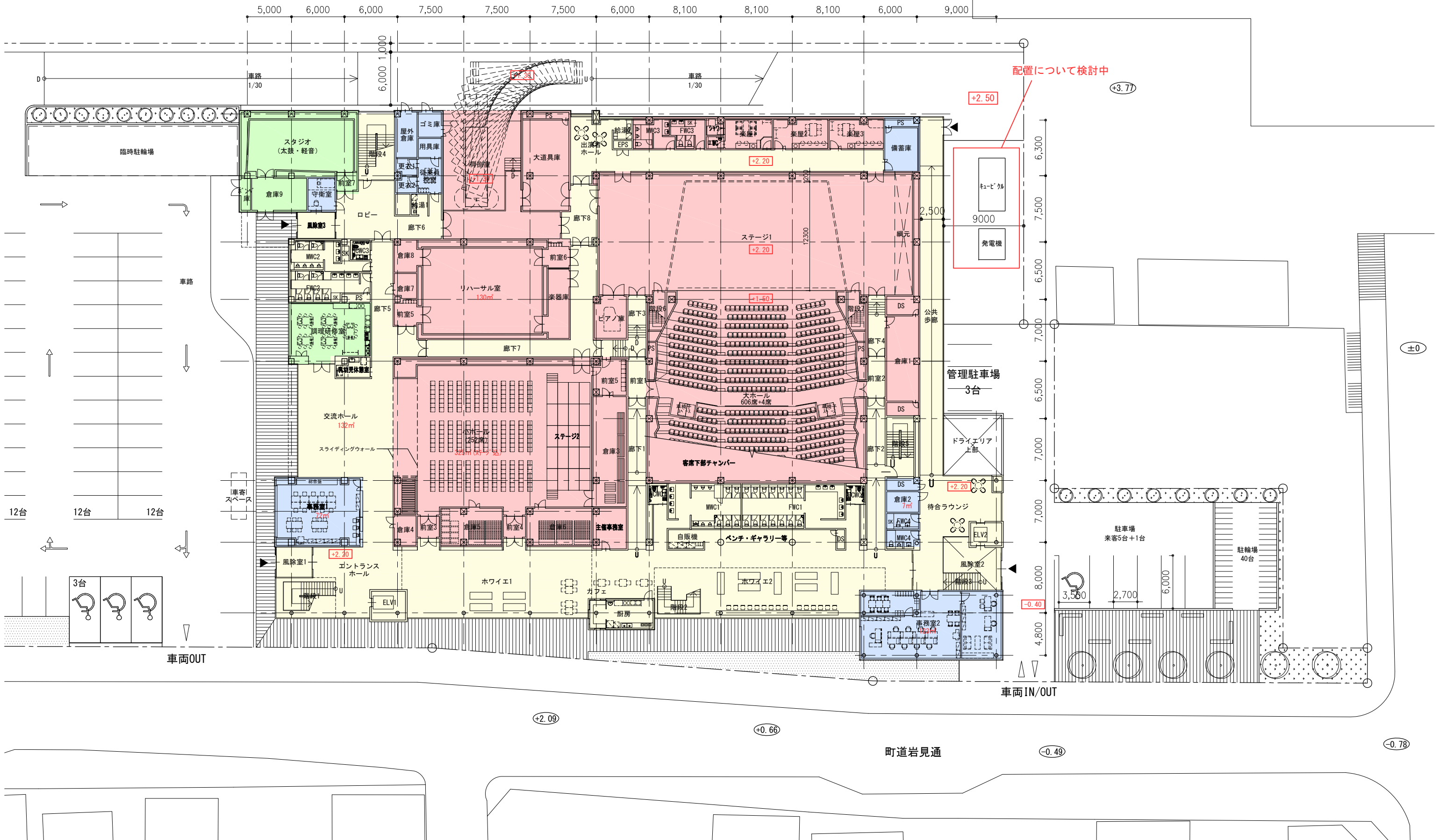
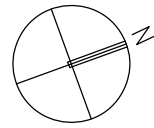


# 線路敷





配置について検討中

+2.50

+3.77



9000

±0

管理駐車場  
3台

+2.20

ドライエリア  
上部

+2.20

倉庫2  
7m

待合ラウンジ

風除室2

-0.40

車両IN/OUT

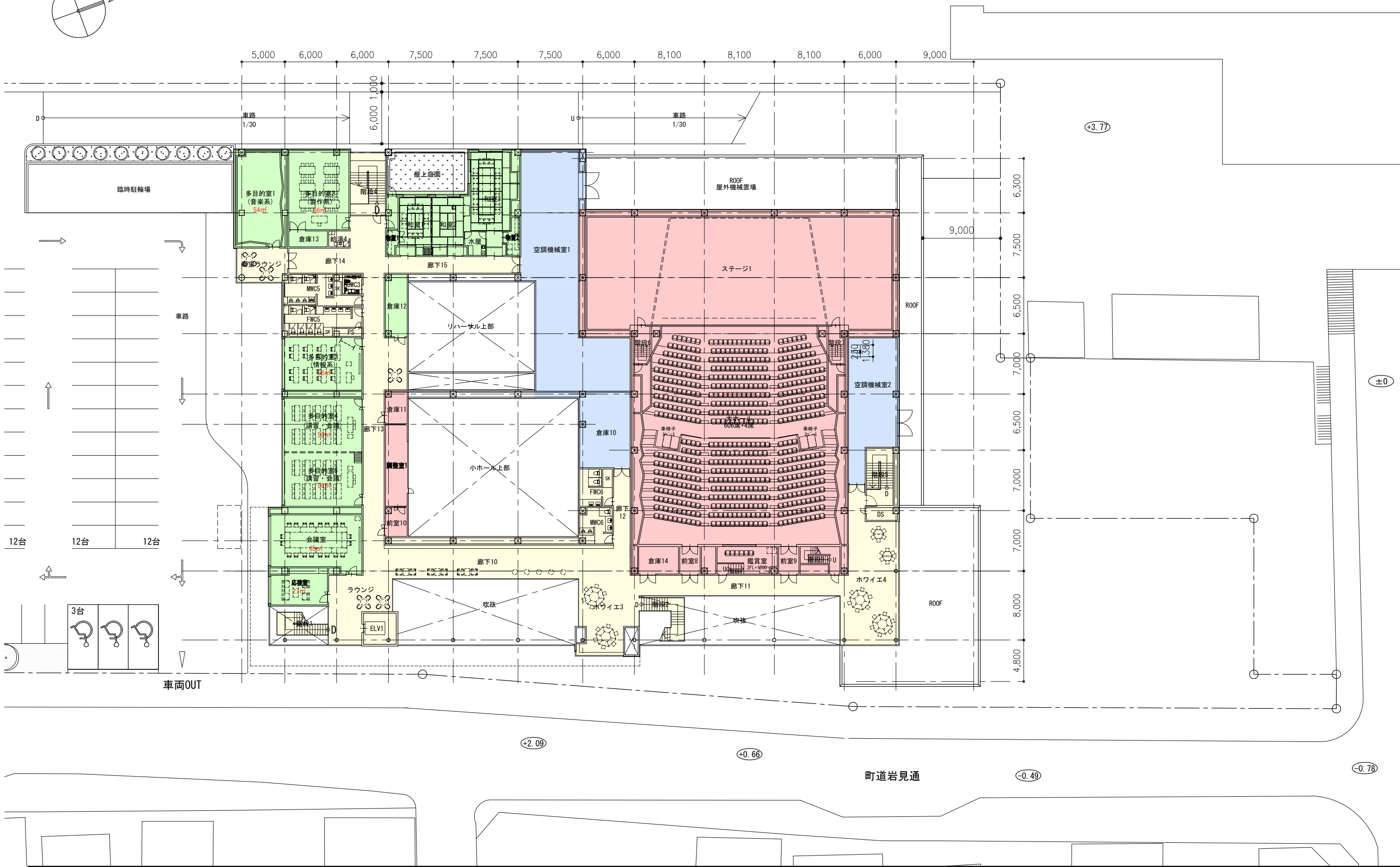
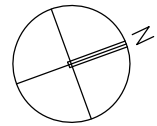
+2.09

+0.66

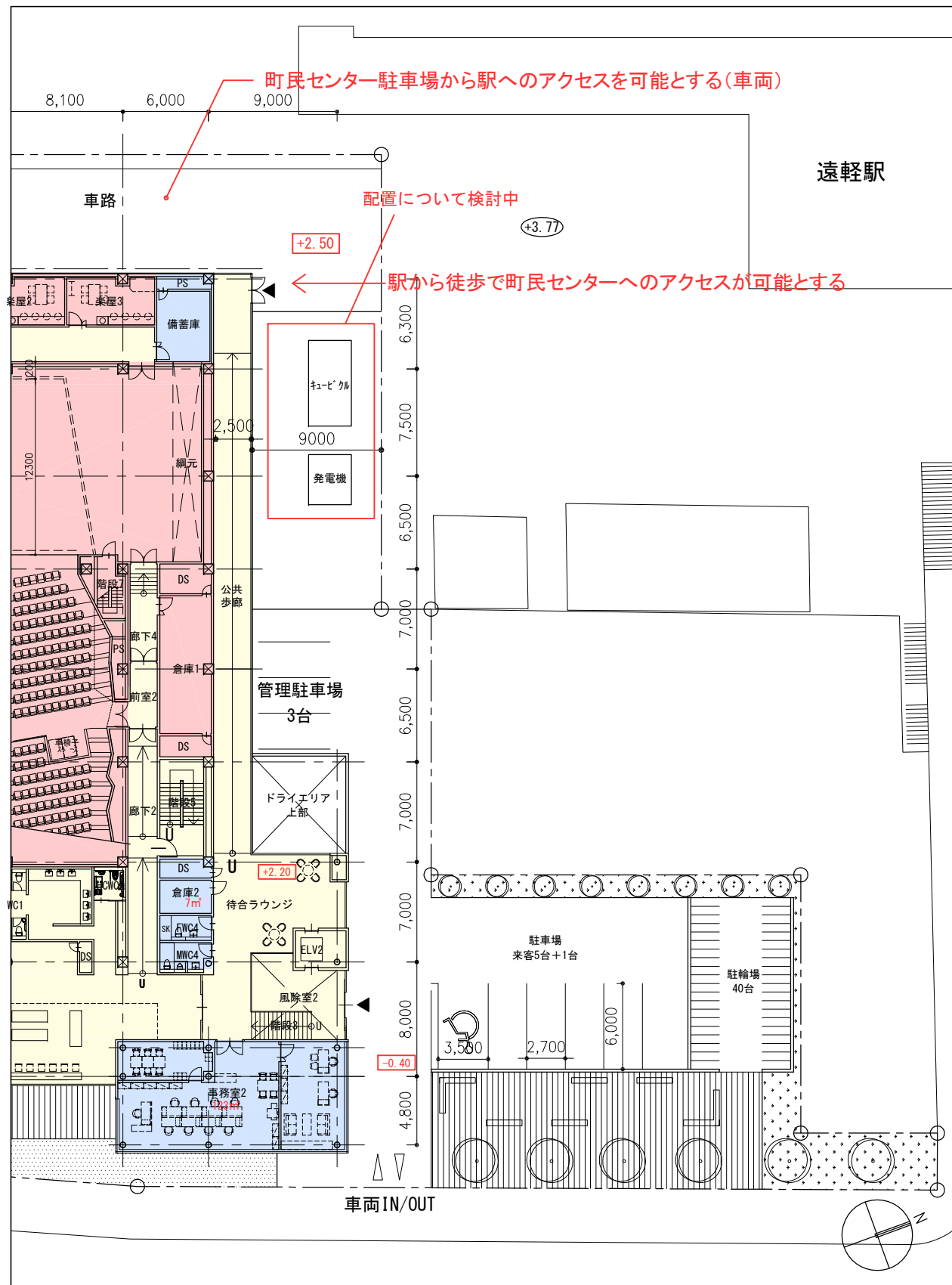
町道岩見通

-0.49

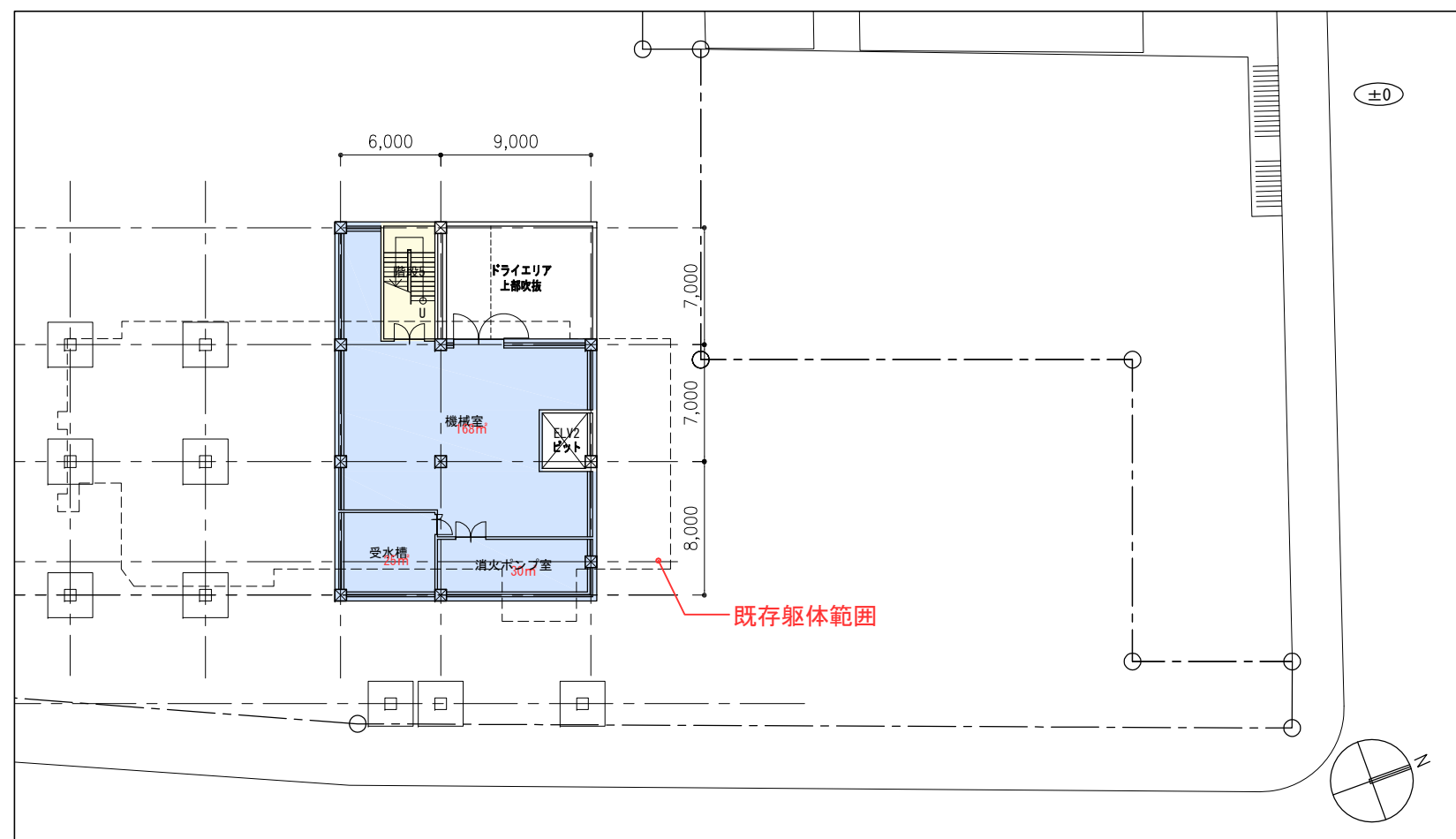
-0.78

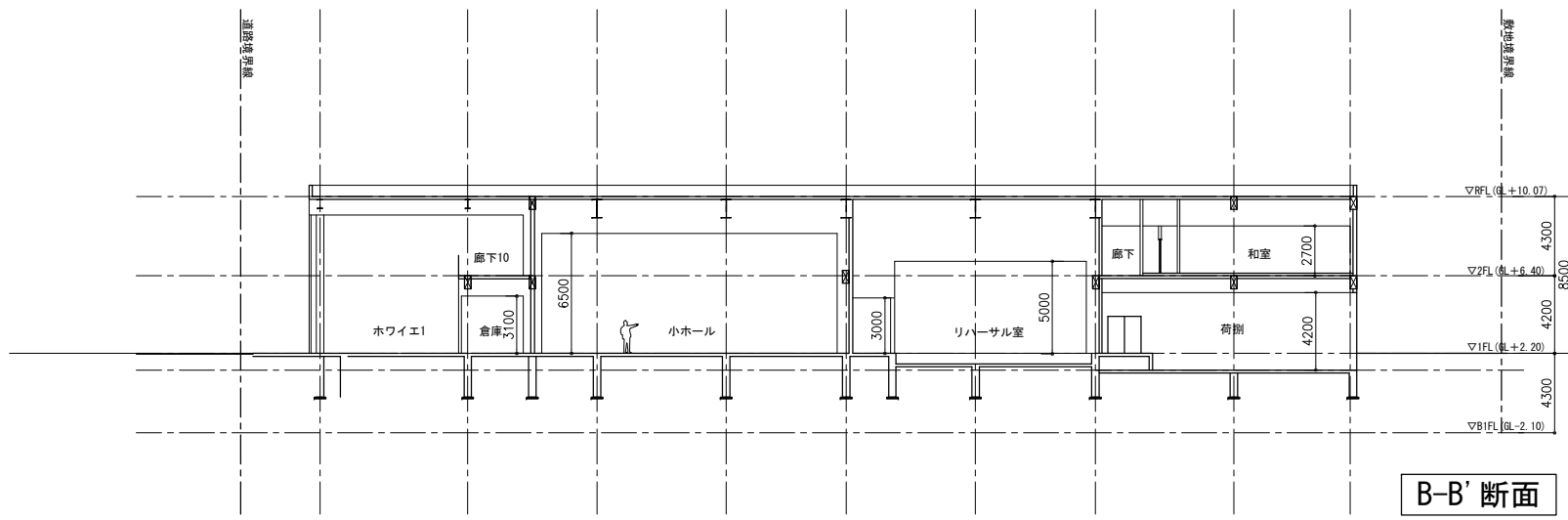


1階

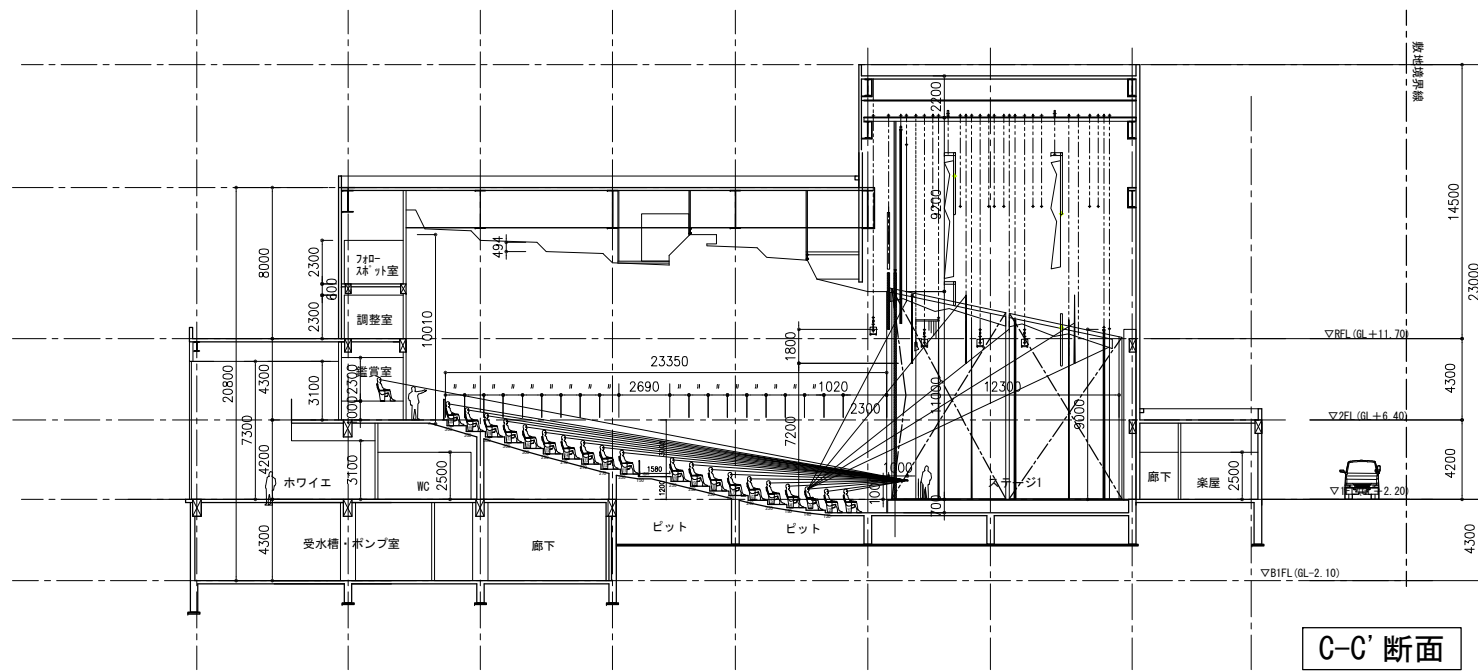


地下1階

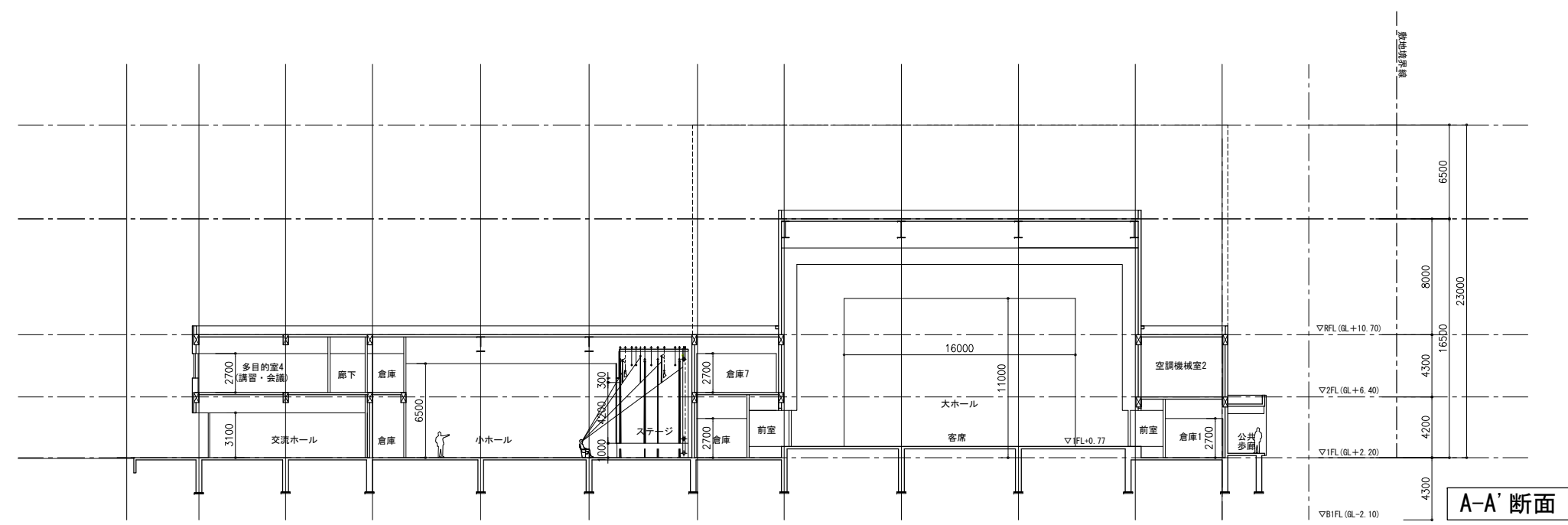
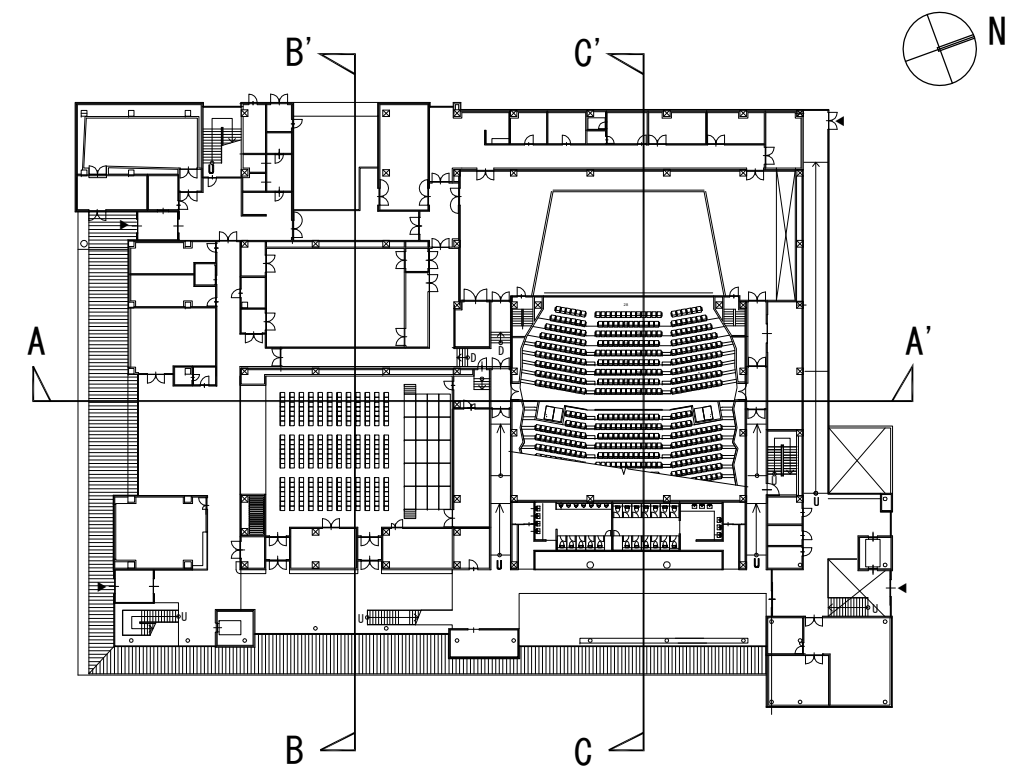




B-B' 断面



C-C' 断面



A-A' 断面